


Supplementary Material for

**Social Sensing the 2018 Kīlauea Volcanic Eruption Through Community
Facebook Use**

Annie Matthews¹, and James Hickey^{*1}

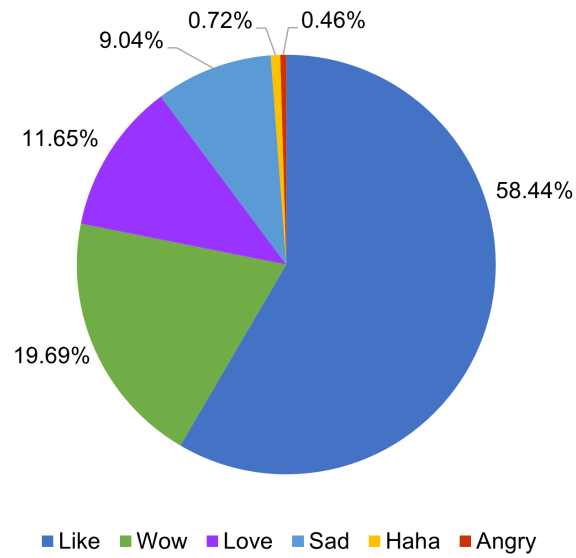
¹ Department of Earth and Environmental Sciences, University of Exeter, UK

* j.hickey@exeter.ac.uk [corresponding author]

 ORCID (JH): 0000.0002.5391.3415

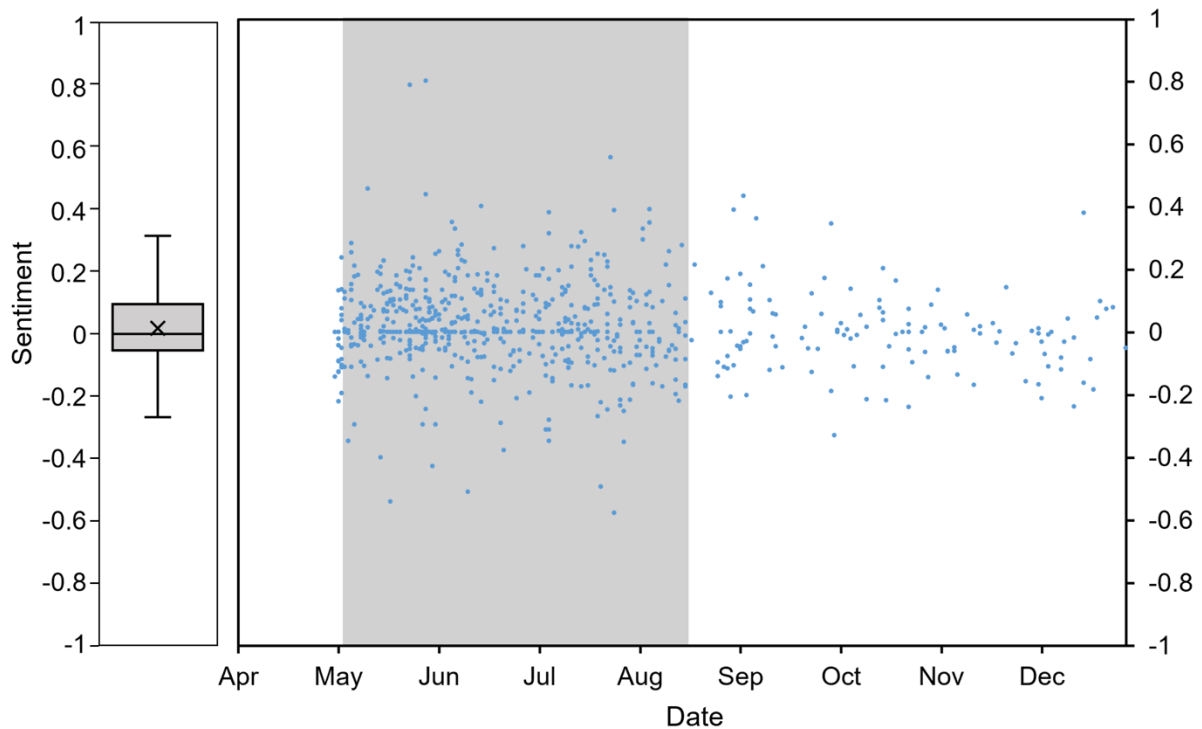
Matthews, A. and Hickey, J. (2025) "Social sensing the 2018 Kīlauea Volcanic eruption through community Facebook use", *Volcanica*, 8(2), pp. 483–501.
doi: 10.30909/vol/hads1263.

Supplementary Figure 1



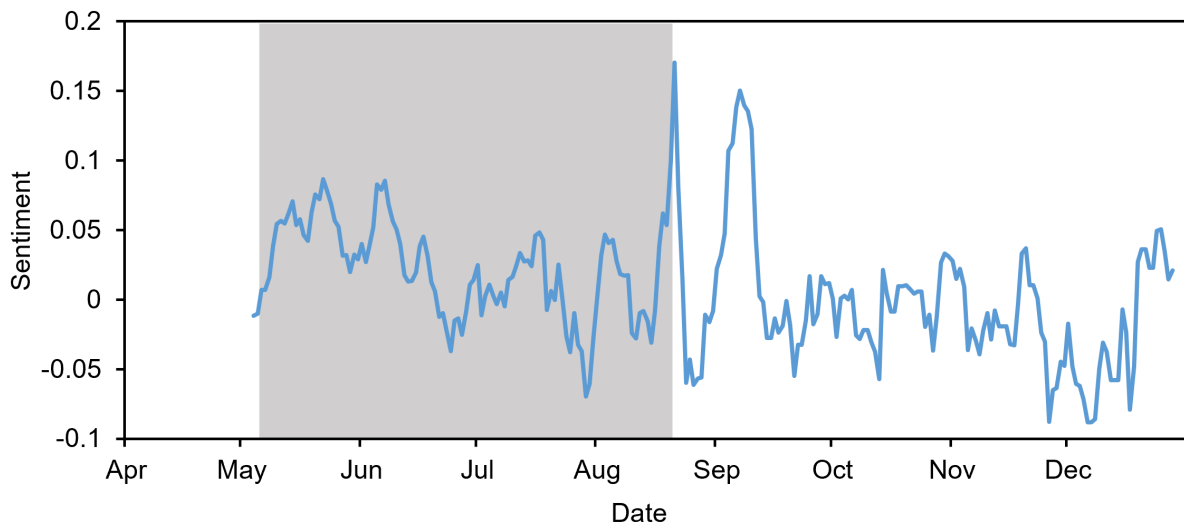
Supplementary Figure 1: Proportion of reactions to relevant posts.

Supplementary Figure 2



Supplementary Figure 2: Sentiment analysis results of all relevant posts mentioning the USGS or HVO from the 1st April 2018 to the 31st December 2018. [A] Mean (cross), median (middle line) and range of sentiment from relevant posts. [B] Daily sentiment distribution. VAL at WARNING indicated by grey background.

Supplementary Figure 3



Supplementary Figure 3: The 7-day moving average of sentiment from relevant posts mentioning the USGS or HVO from the 1st April 2018 to the 31st December 2018. VAL at WARNING indicated by grey background.

Supplementary Table 1

Supplementary Table 1: Search phrases used to identify posts mentioning the USGS or HVO.

USGS	HVO
USGS	HVO
US geological survey	Hawaiian Volcanoes Observatory
United states geological survey	Hawaiian volcano observatory
Geological survey	Hawaii volcano observatory
U.S. geological survey	
U. S. geological survey	