

Supplementary Material for:
Experimental insights into factors influencing Vp/Vs ratios at the Nevado del Ruiz Volcano, Colombia

 Joaquin Pablo Aguilera Bustos*^α and  Ludmila Adam^α

^α School of Environment, Faculty of Science, Science Centre, The University of Auckland, 23 Symonds St, Auckland, New Zealand.

This supplementary material accompanies the article:

Aguilera Bustos, J. P. and Adam, L. (2023) “Experimental insights into factors influencing Vp/Vs ratios at the Nevado del Ruiz Volcano, Colombia”, *Volcanica*, 6(2), pp. 283–299. DOI: <https://doi.org/10.30909/vol.06.02.283299>.

Aguilera Bustos & Adam (2023) should be cited if this material is used independently of the article.

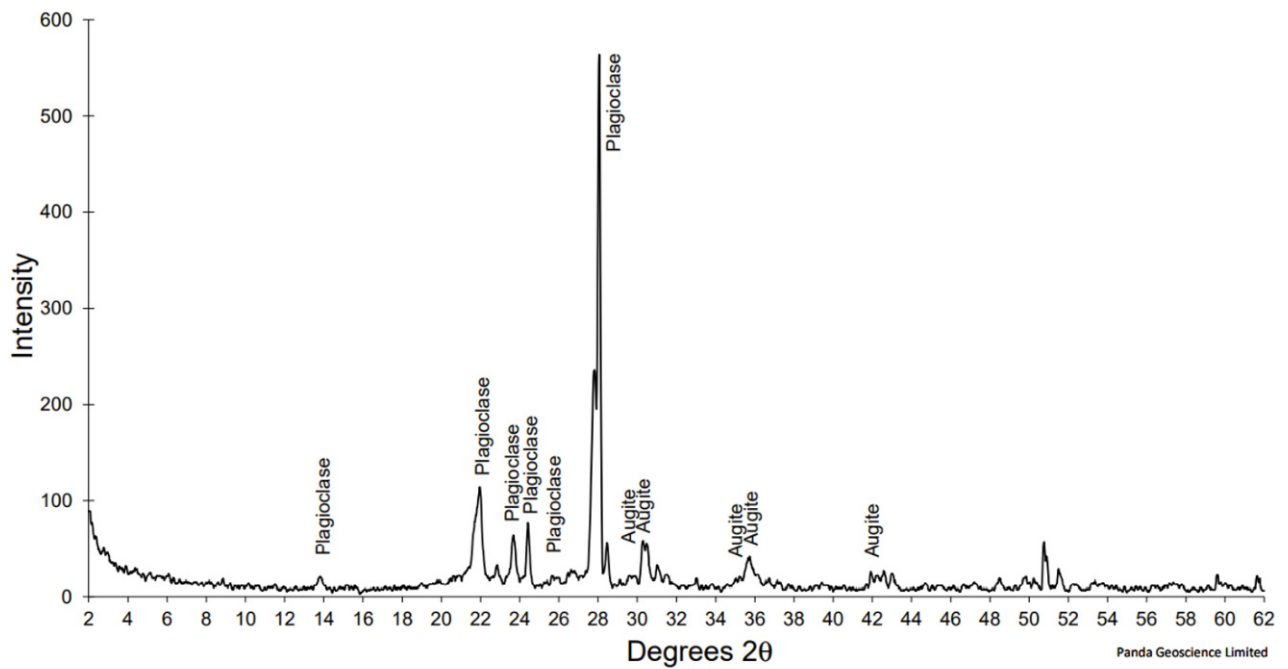


Figure S1: XRD analysis for sample IGN.

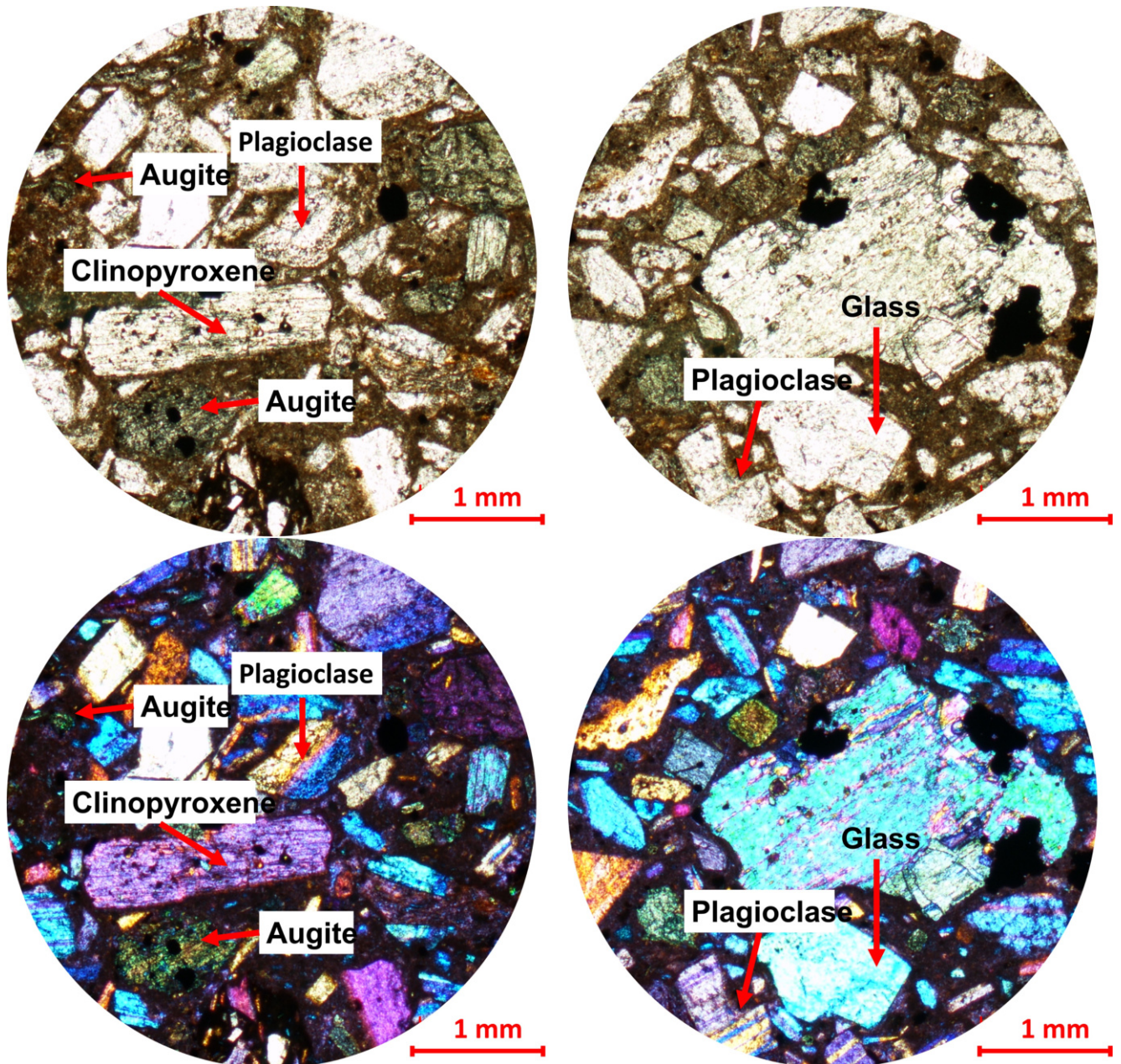


Figure S2: Microphotographs for sample IGN. Transmitted (top) and crosspolarized (bottom) light.

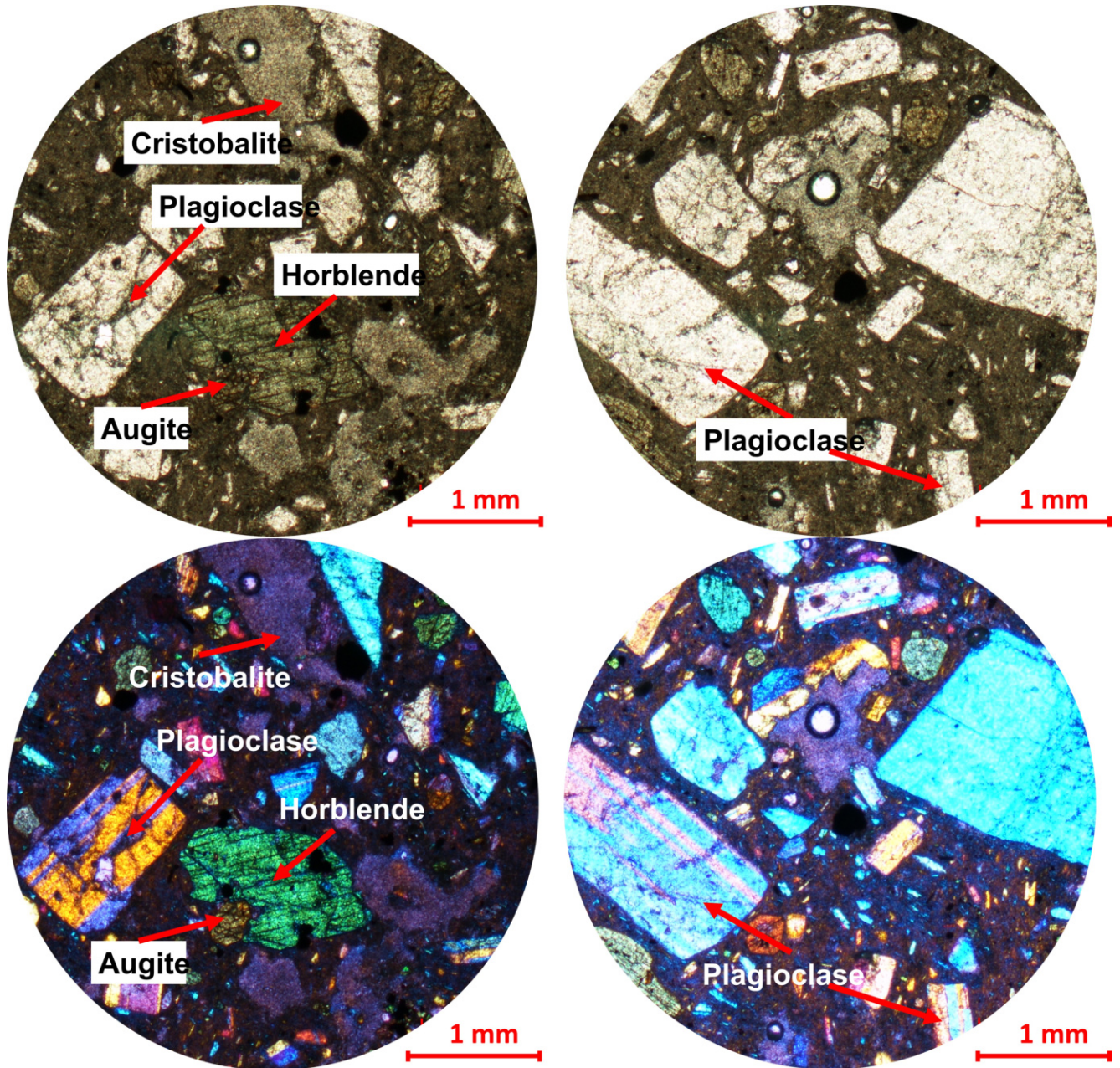


Figure S4: Microphotographs for sample LAV. Transmitted (top) and crosspolarized (bottom) light.

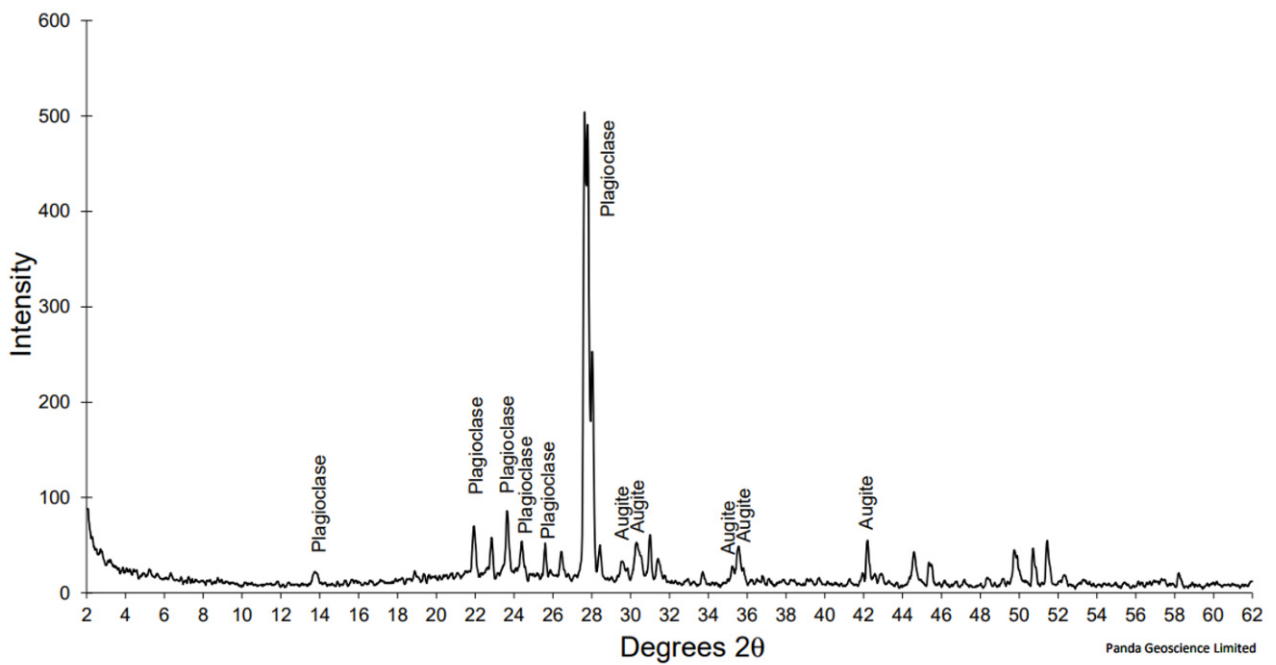


Figure S5: XRD analysis for sample SEPR.

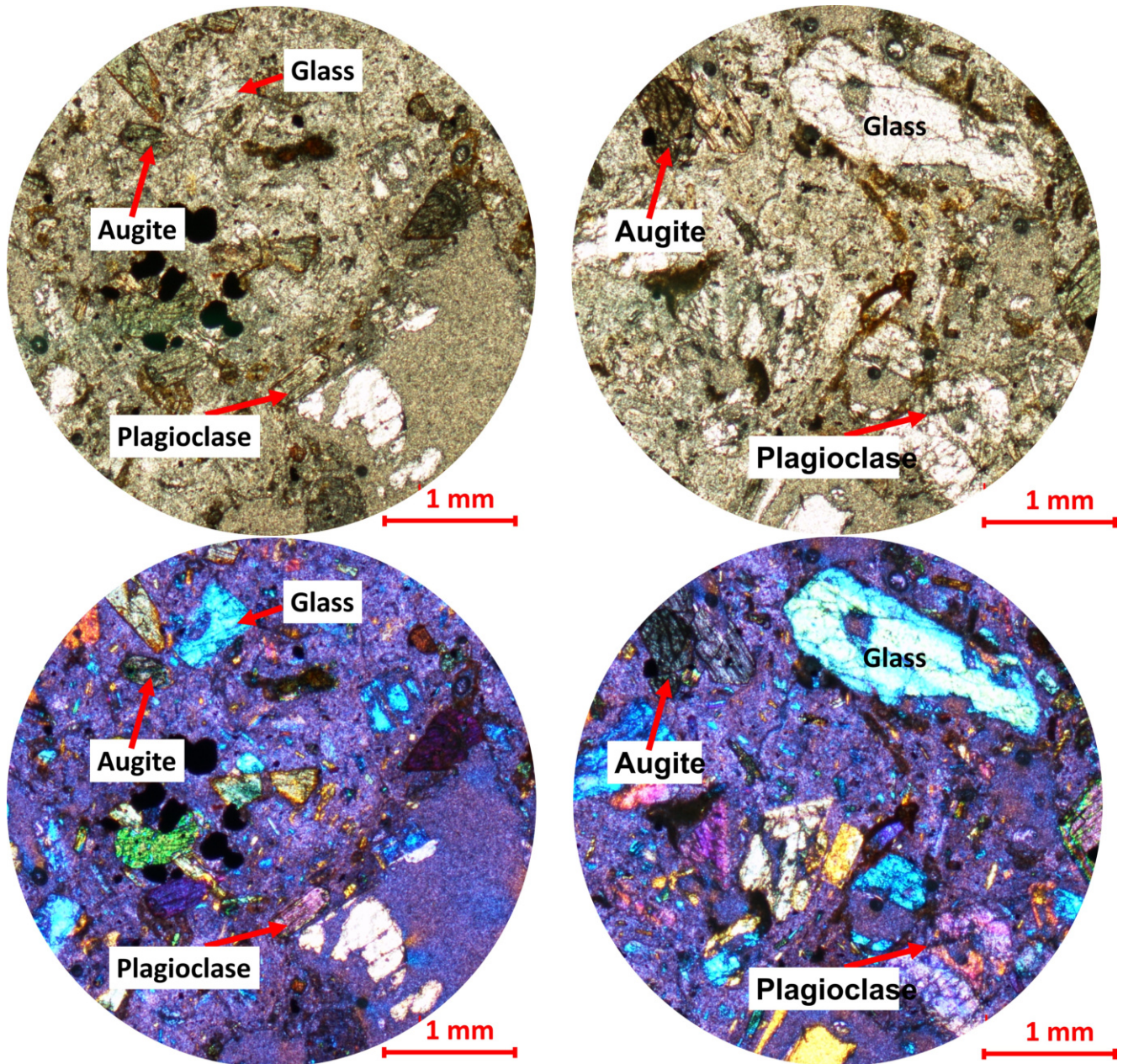


Figure S6: Microphotographs for sample SEPR. Transmitted (top) and crosspolarized (bottom) light.

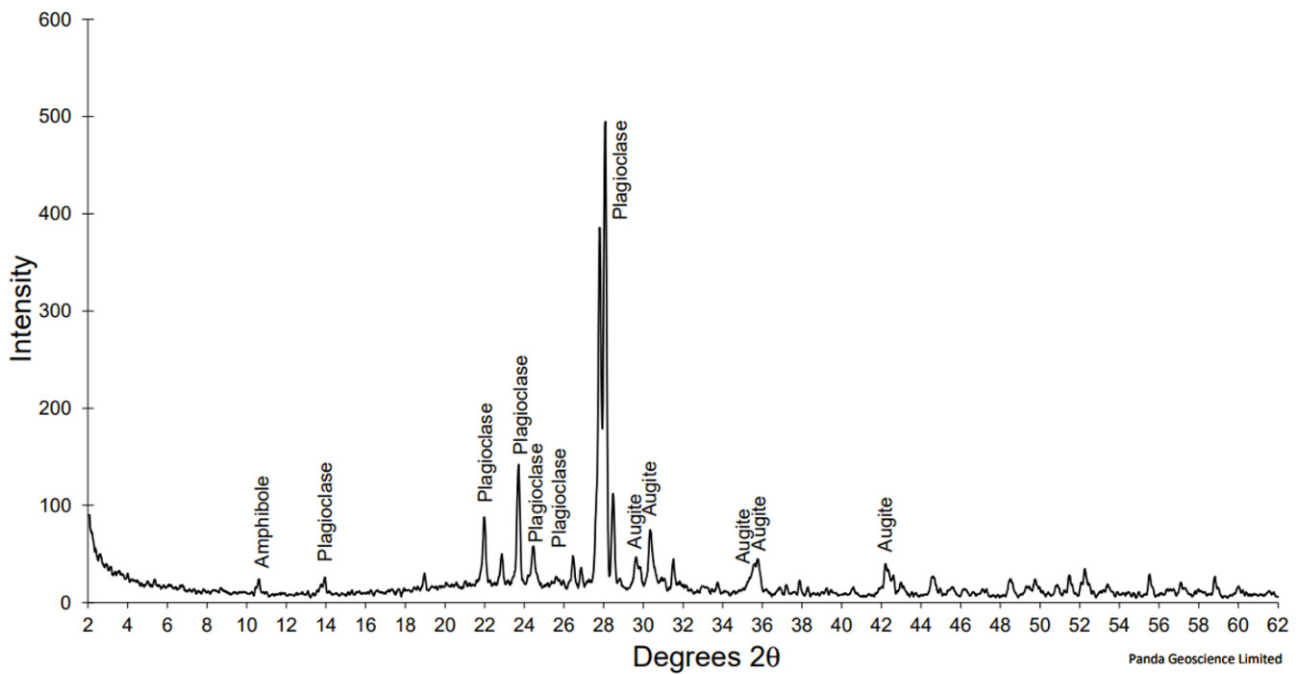


Figure S7: XRD analysis for sample OLL.

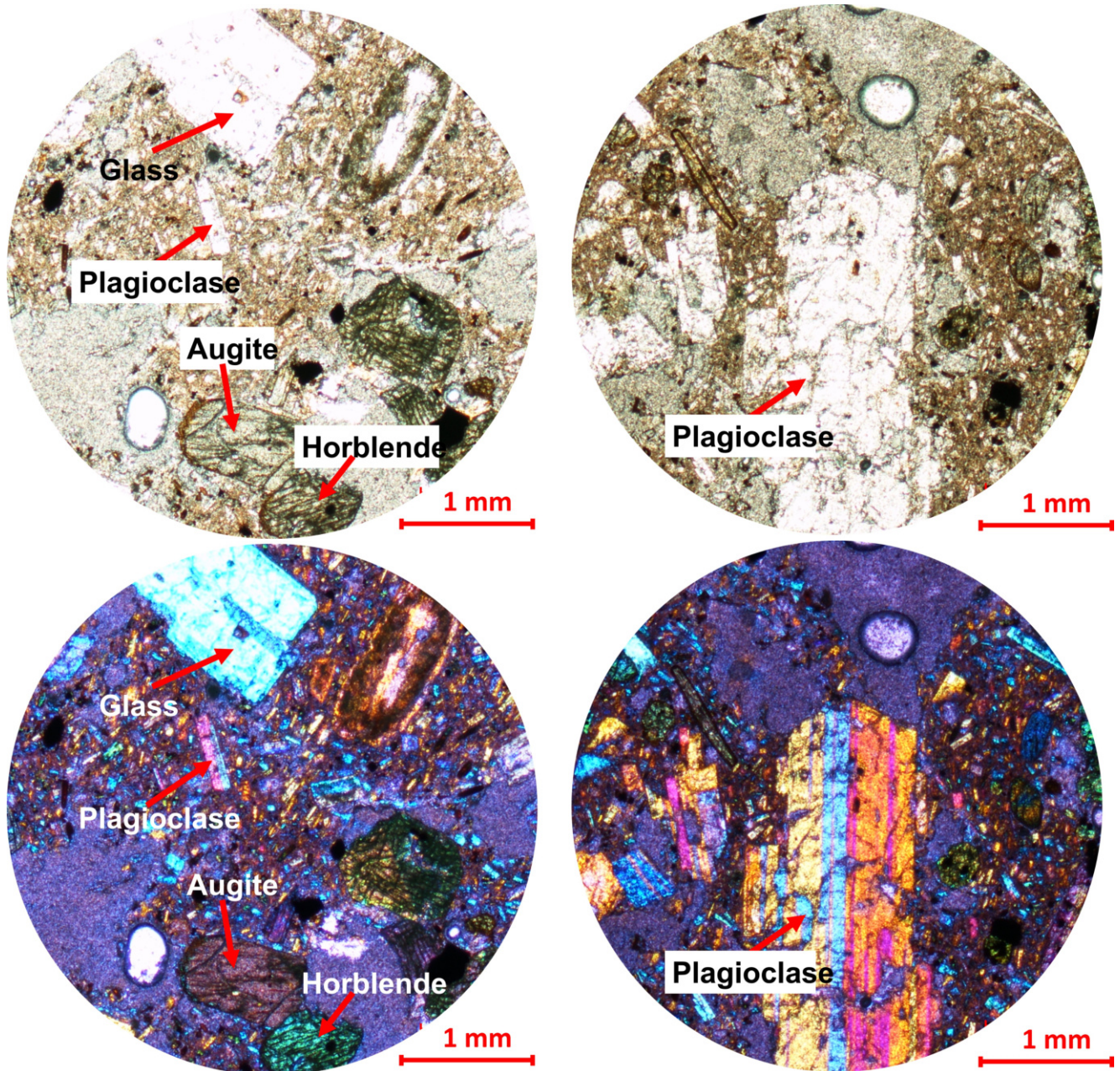


Figure S8: Microphotographs for sample OLL. Transmitted (top) and crosspolarized (bottom) light.

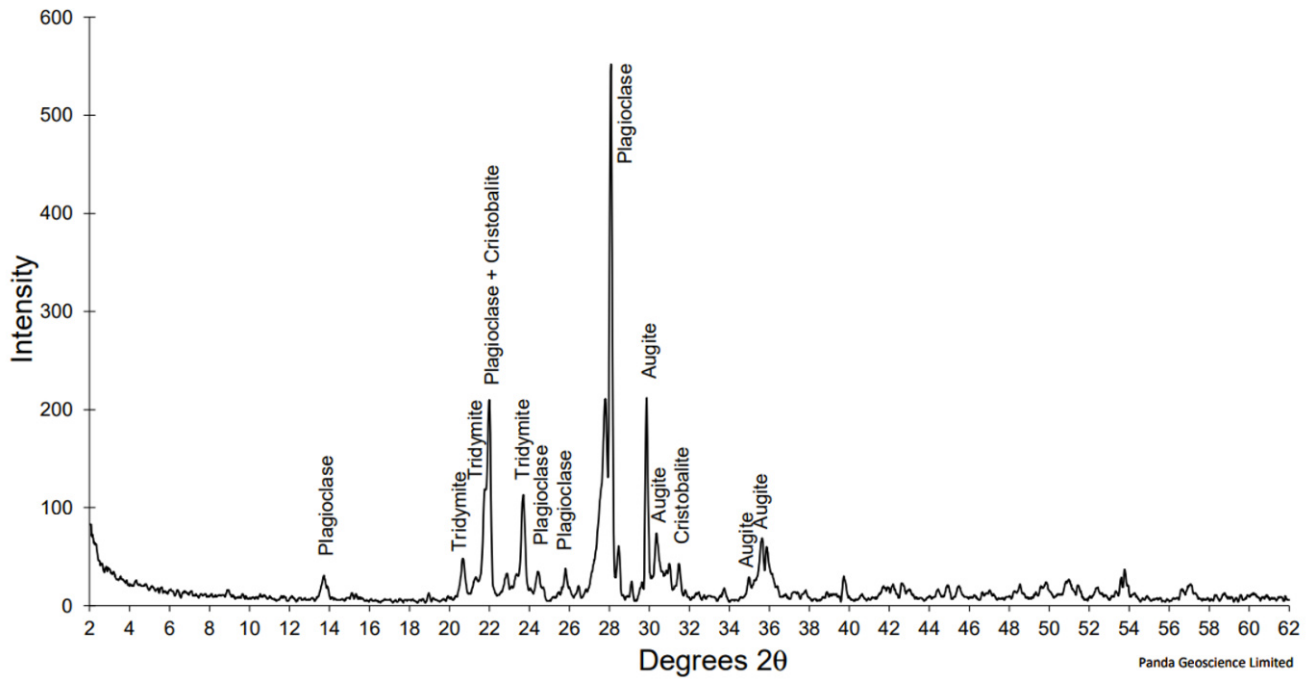


Figure S9: XRD analysis for sample FEPR.

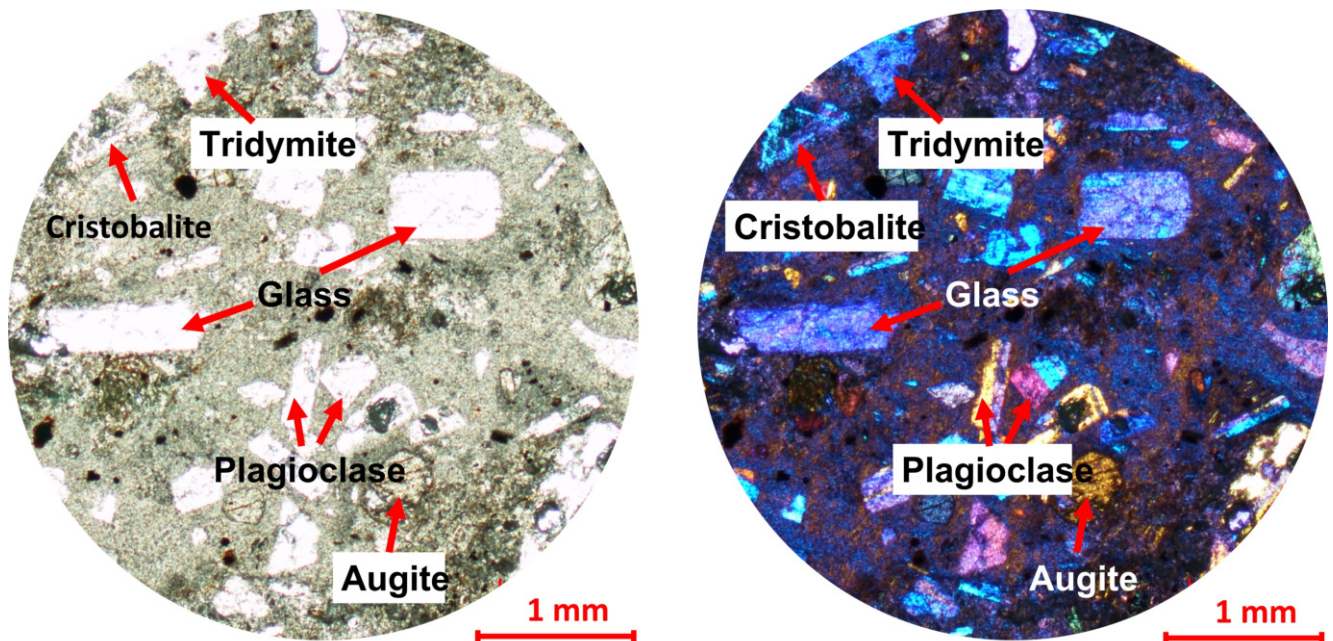


Figure S10: Microphotographs for sample FEPR. Transmitted (left) and crosspolarized (right) light.

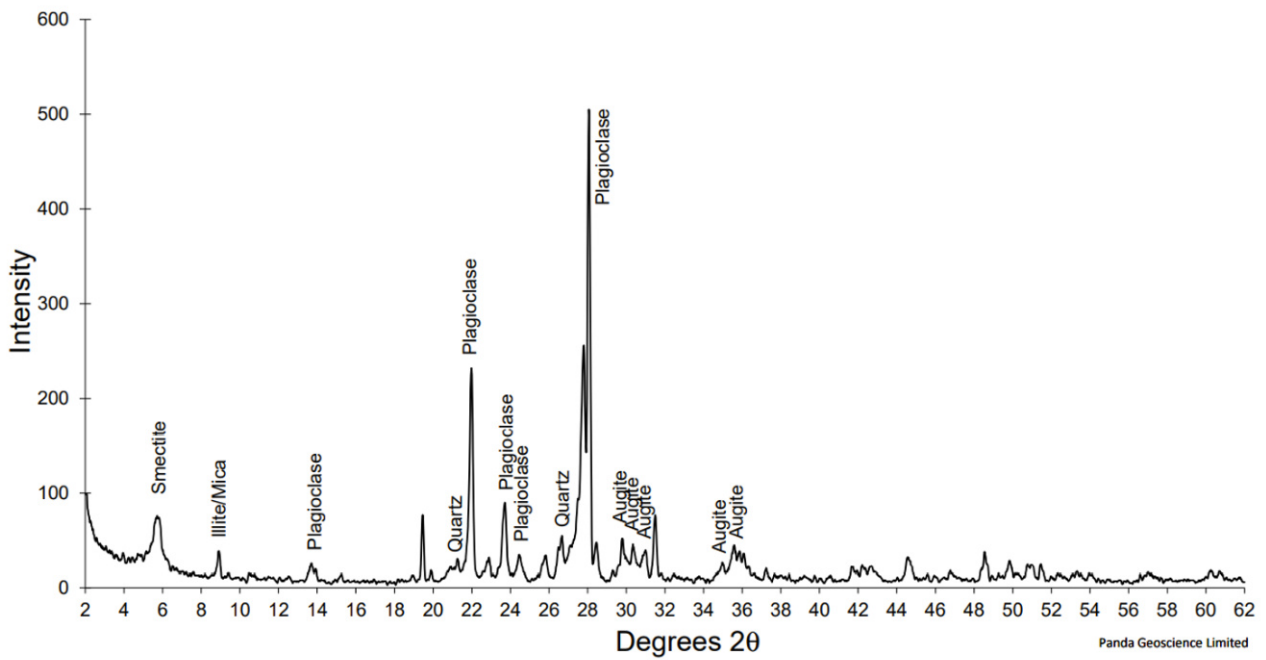


Figure S11: XRD analysis for sample PRE-1.

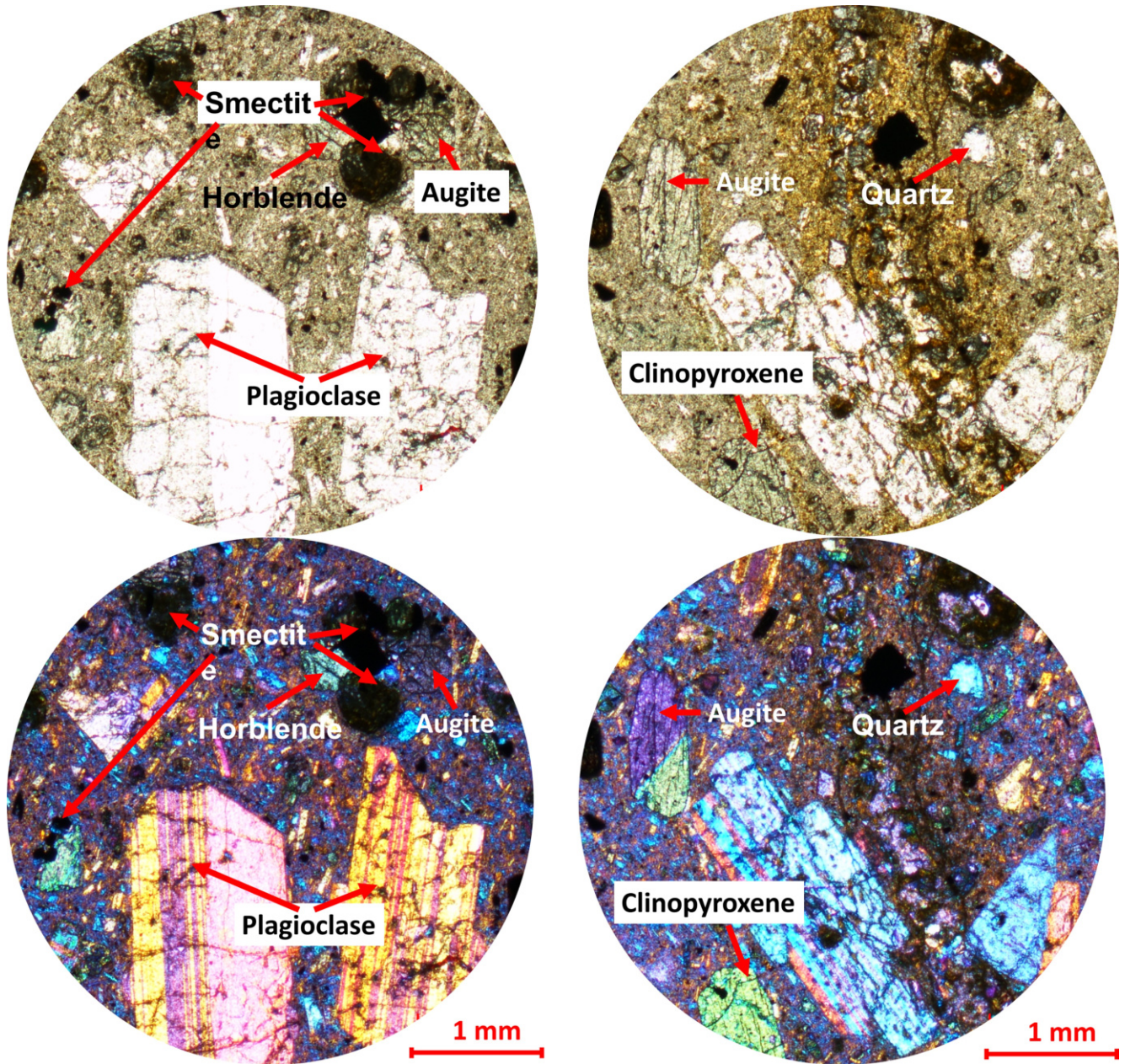


Figure S12: Microphotographs for sample PRE-1. Transmitted (top) and crosspolarized (bottom) light.

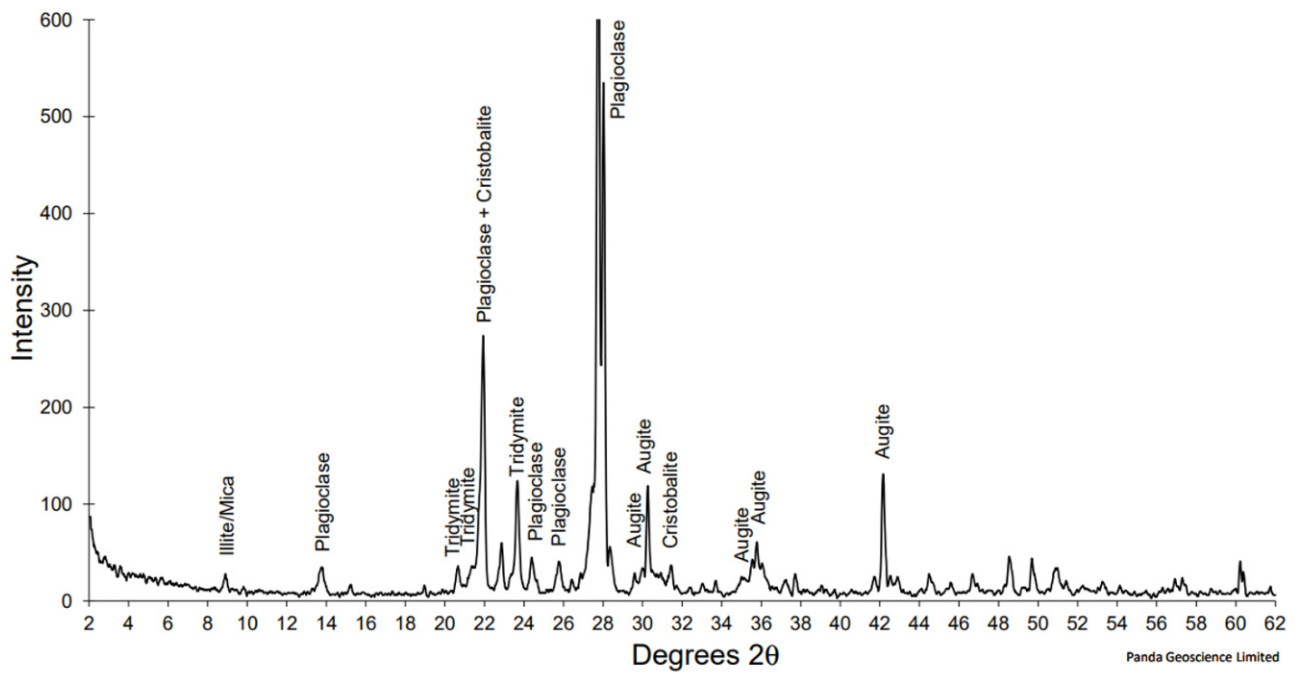


Figure S13: XRD analysis for sample PRE-2.

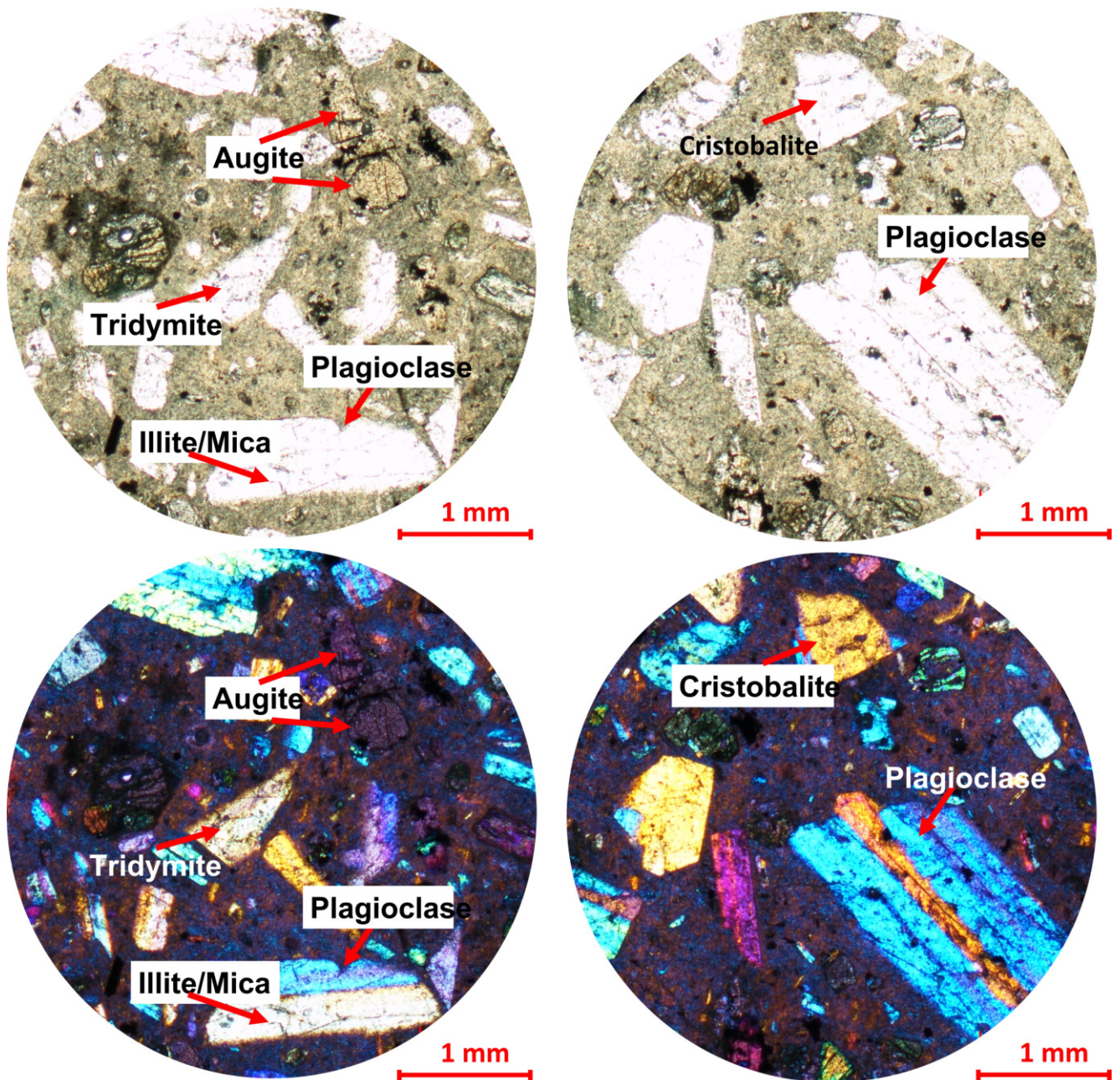


Figure S14: Microphotographs for sample PRE-2. Transmitted (top) and crosspolarized (bottom) light.

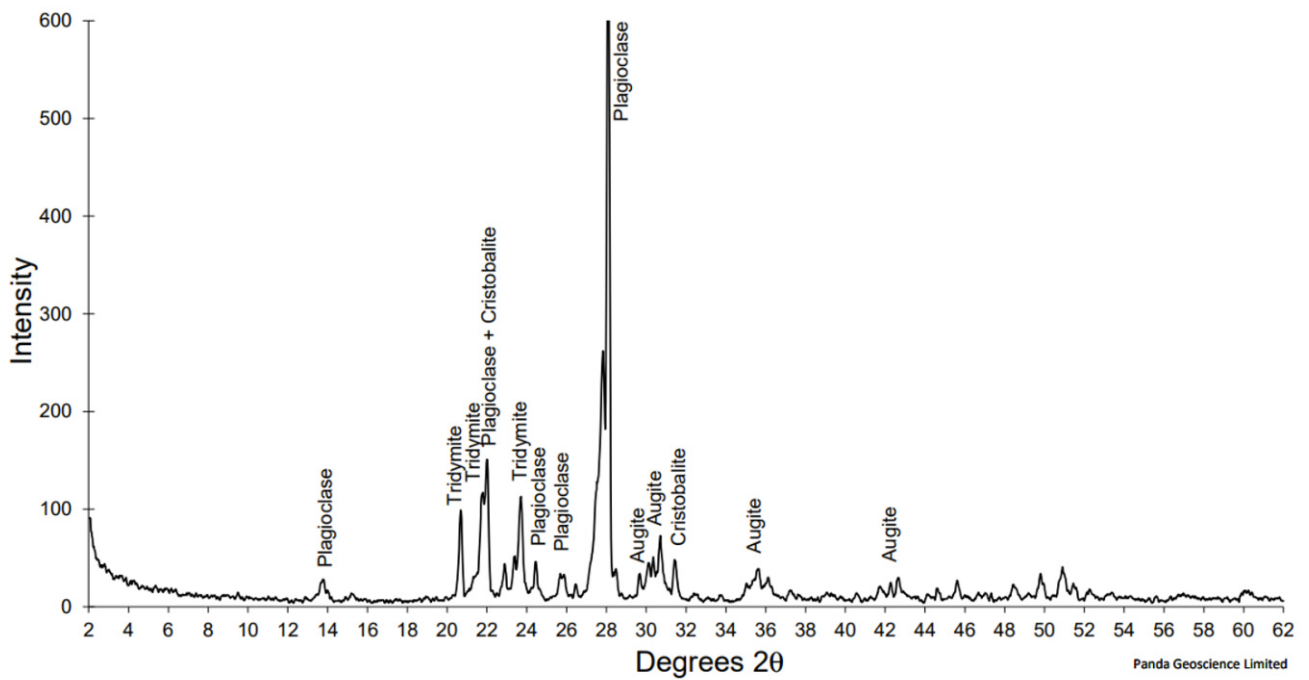


Figure S15: XRD analysis for sample PRE-3.

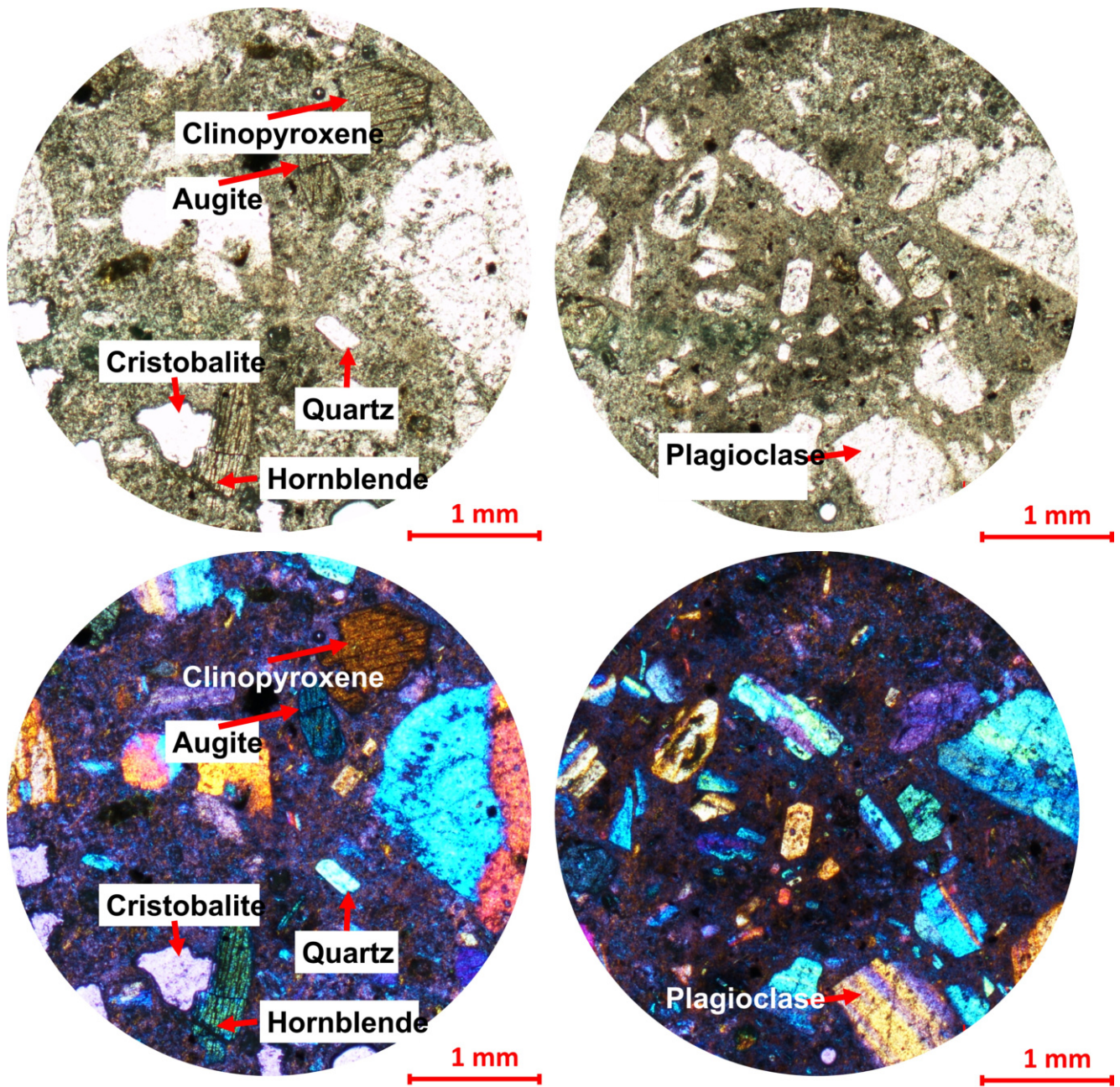


Figure S16: Microphotographs for sample PRE-3. Transmitted (top) and crosspolarized (bottom) light.

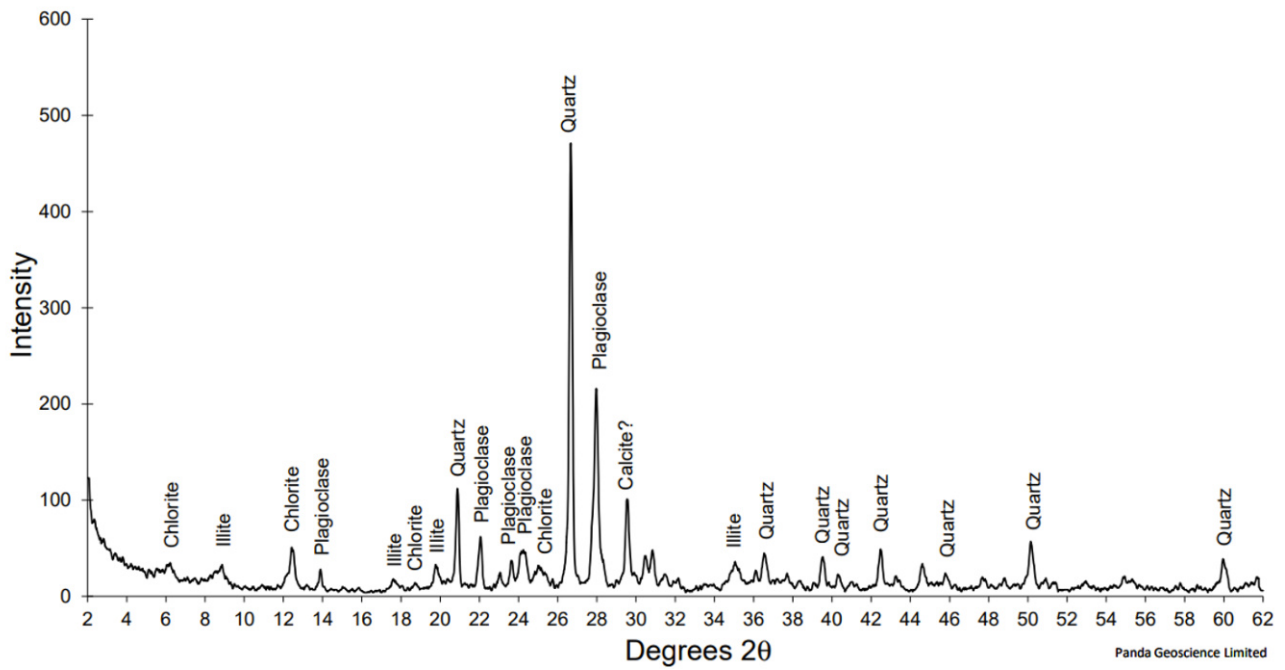


Figure S17: XRD analysis for sample AI.

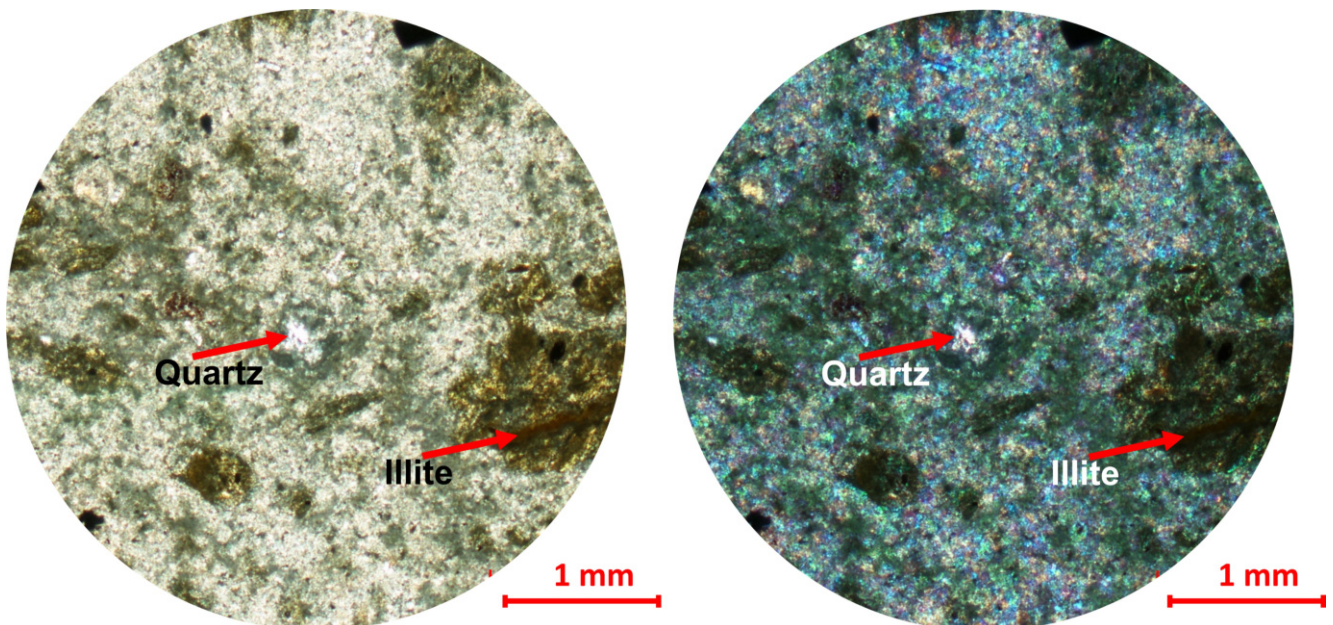


Figure S18: Microphotographs for sample AI. Transmitted (left) and crosspolarized (right) light.

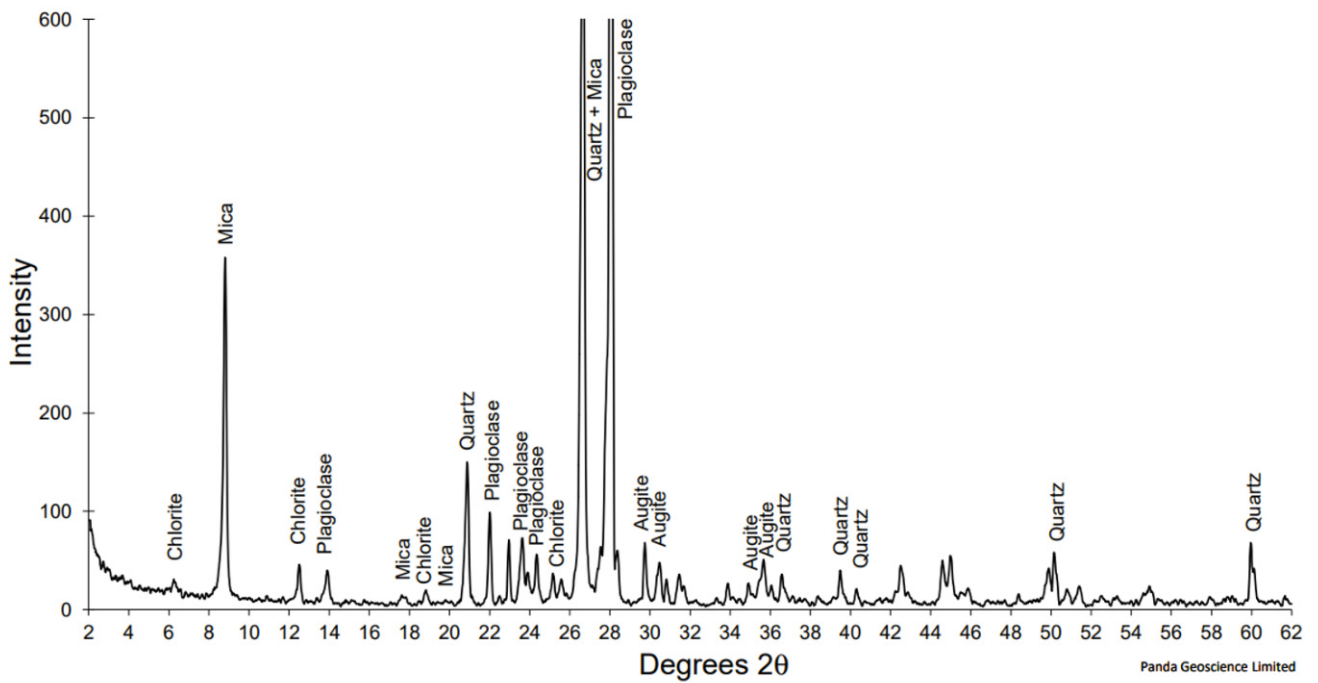


Figure S19: XRD analysis for sample MS.

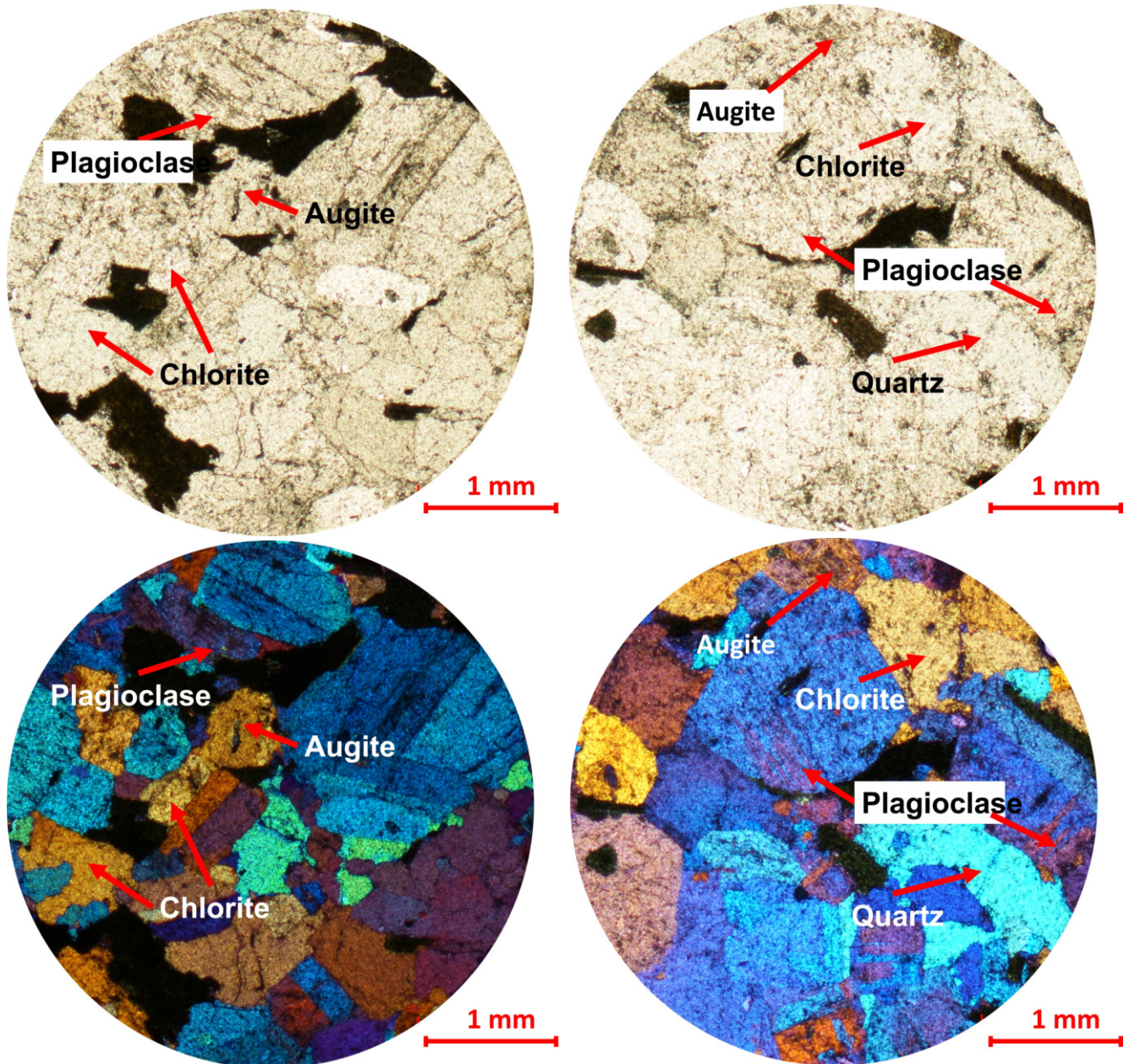


Figure S20: Microphotographs for sample MS. Transmitted (top) and crosspolarized (bottom) light.

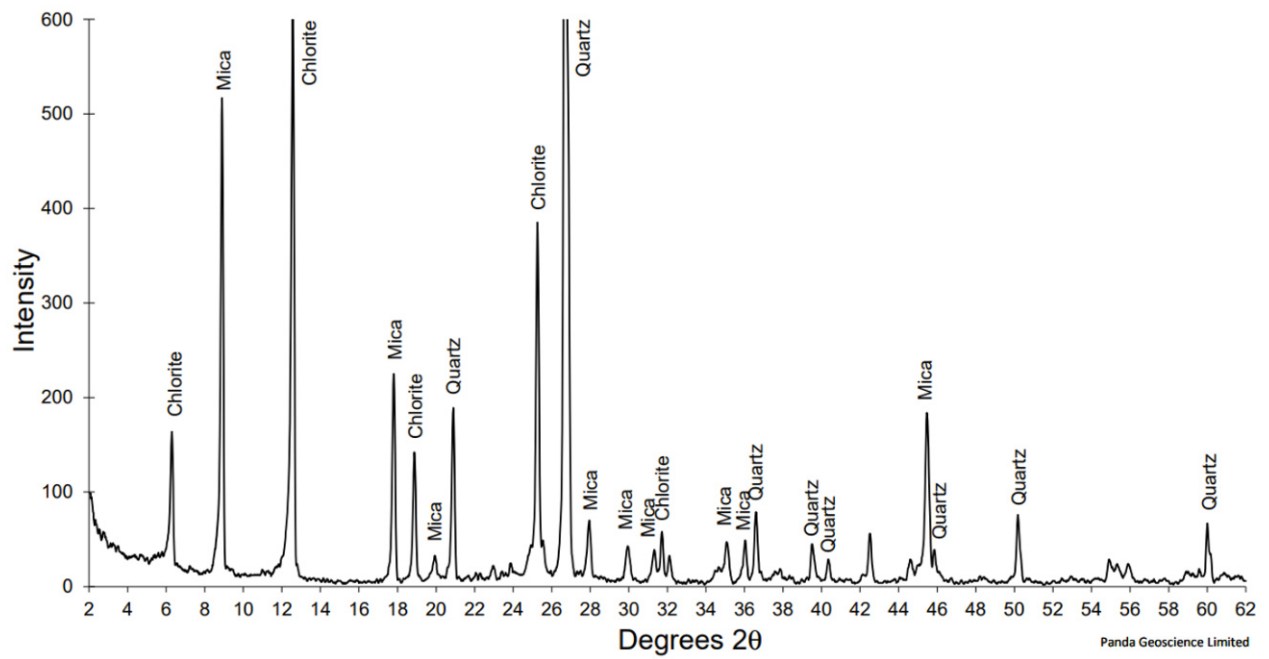


Figure S21: XRD analysis for sample Schist.

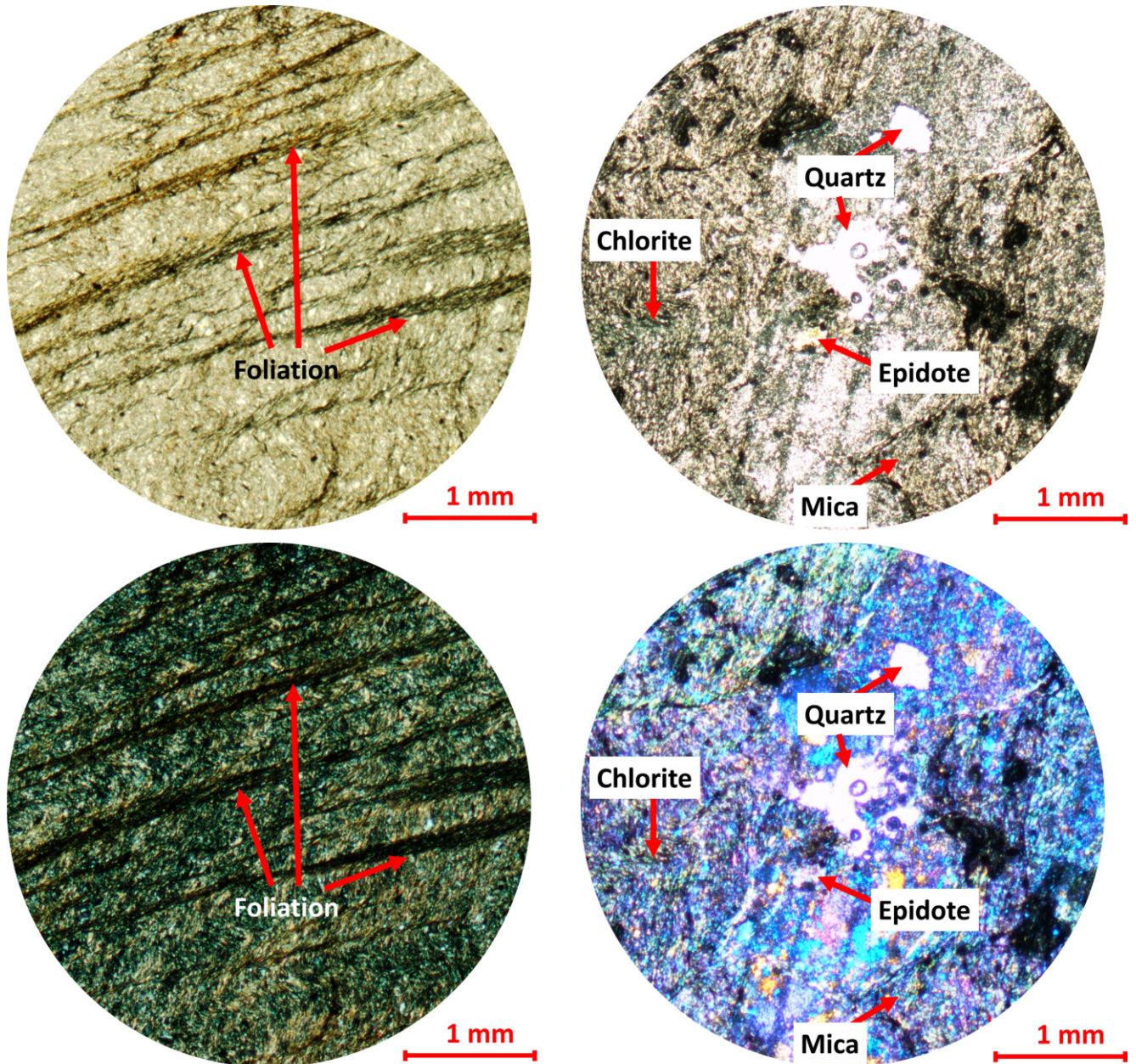


Figure S22: Microphotographs for sample Schist. Transmitted (top) and crosspolarized (bottom) light.

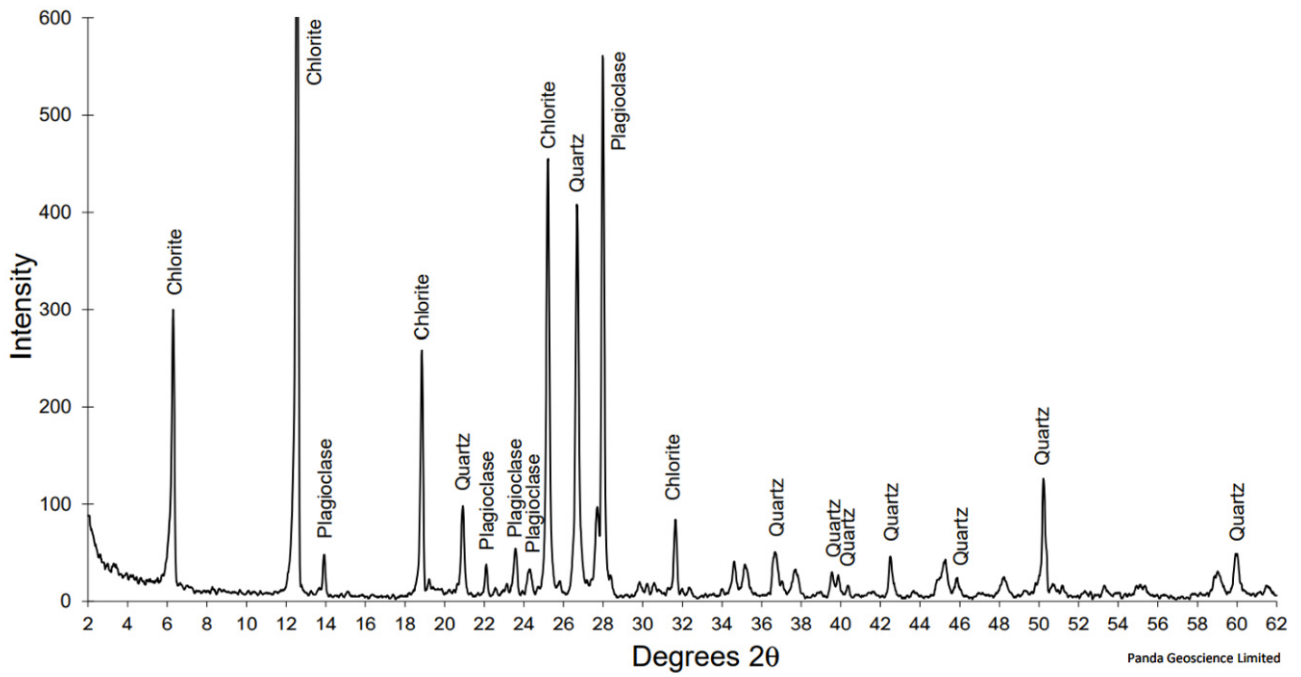


Figure S23: XRD analysis for sample Meta.

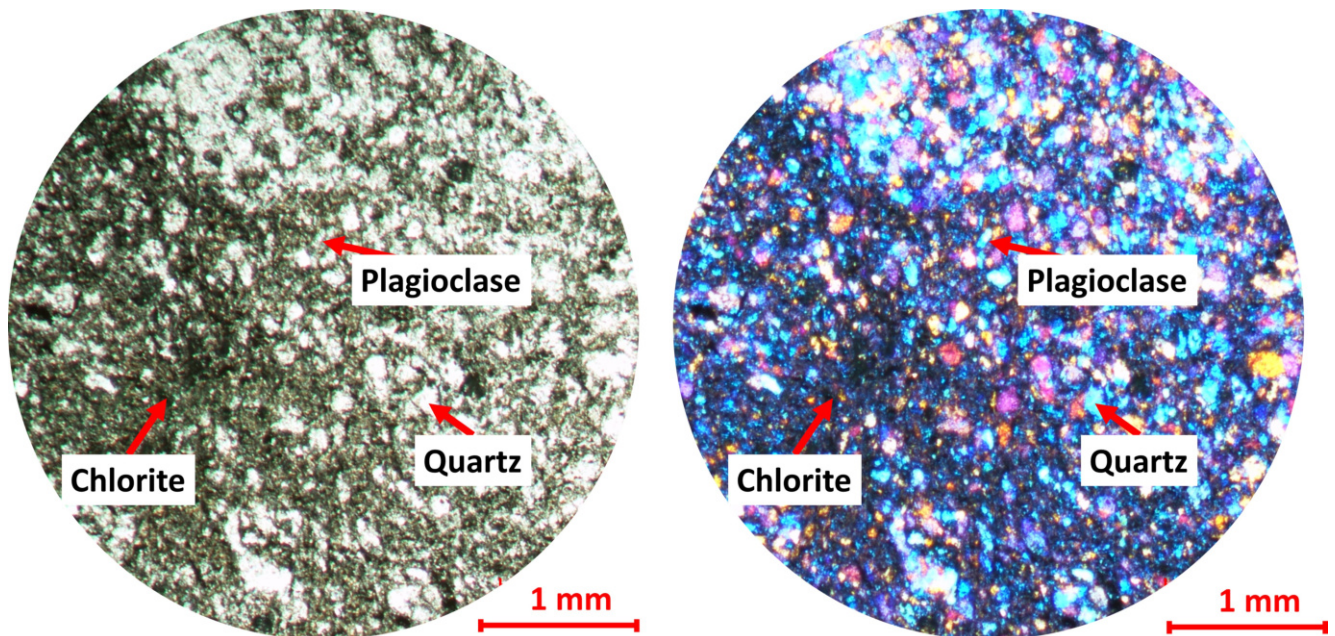


Figure S24: Microphotographs for sample Meta. Transmitted (left) and crosspolarized (right) light.

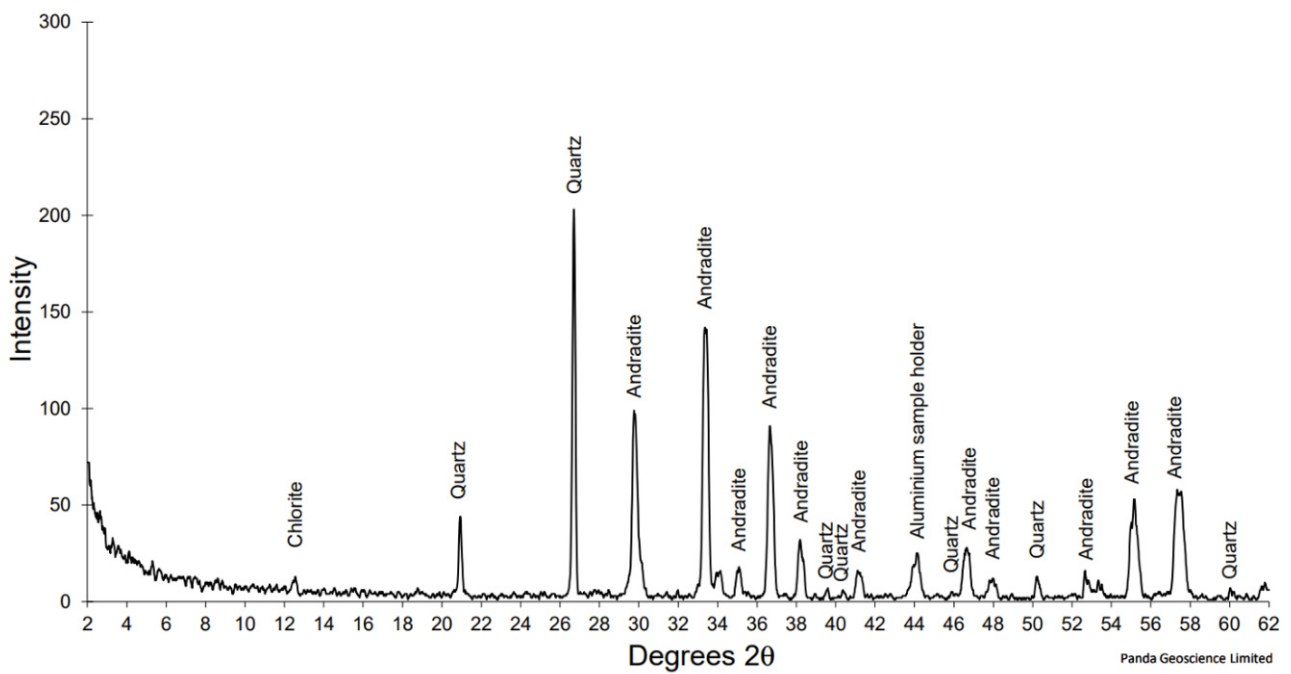


Figure S25: XRD analysis for sample NM.

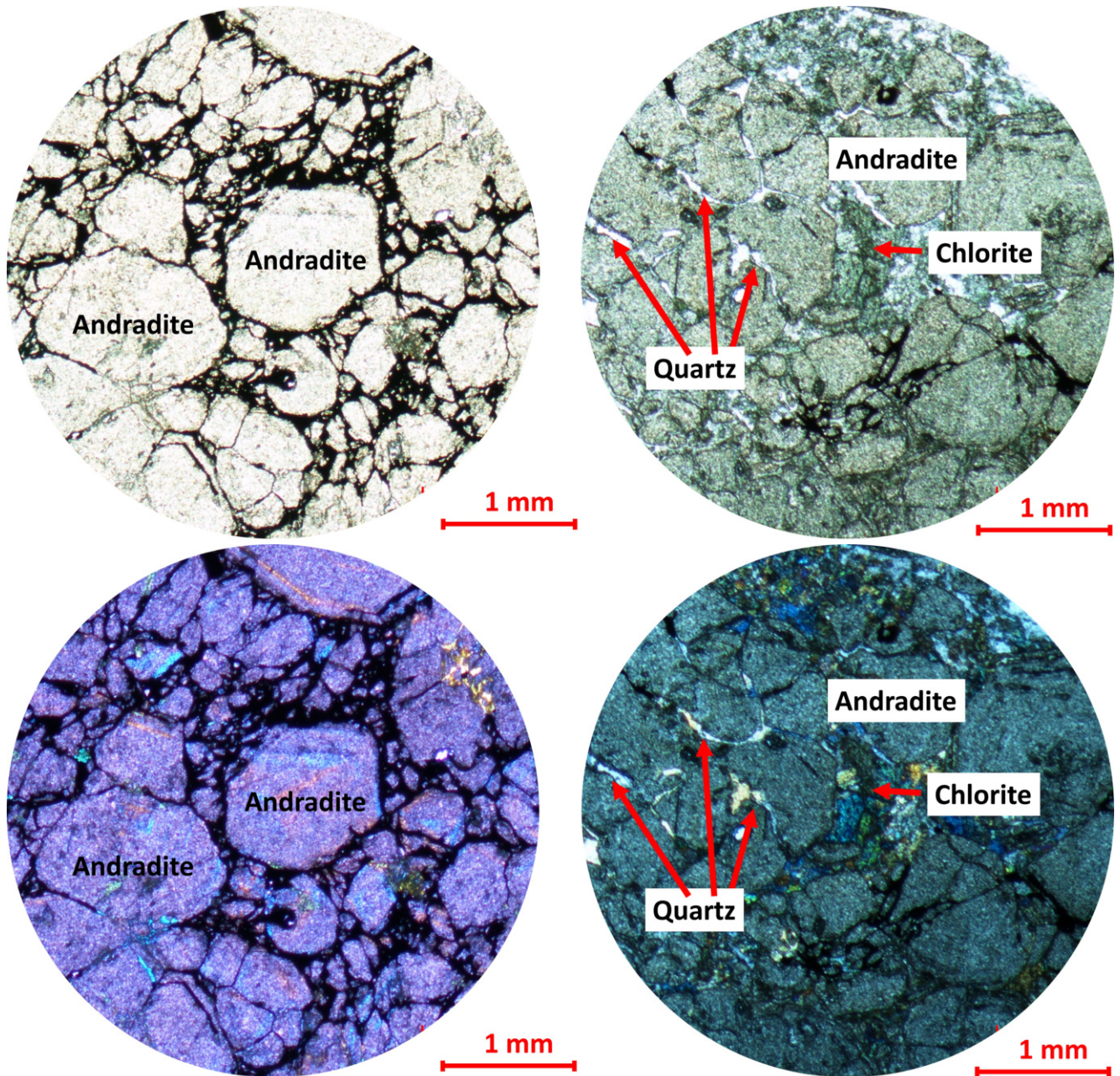


Figure S26: Microphotographs for sample NM. Transmitted (top) and crosspolarized (bottom) light.

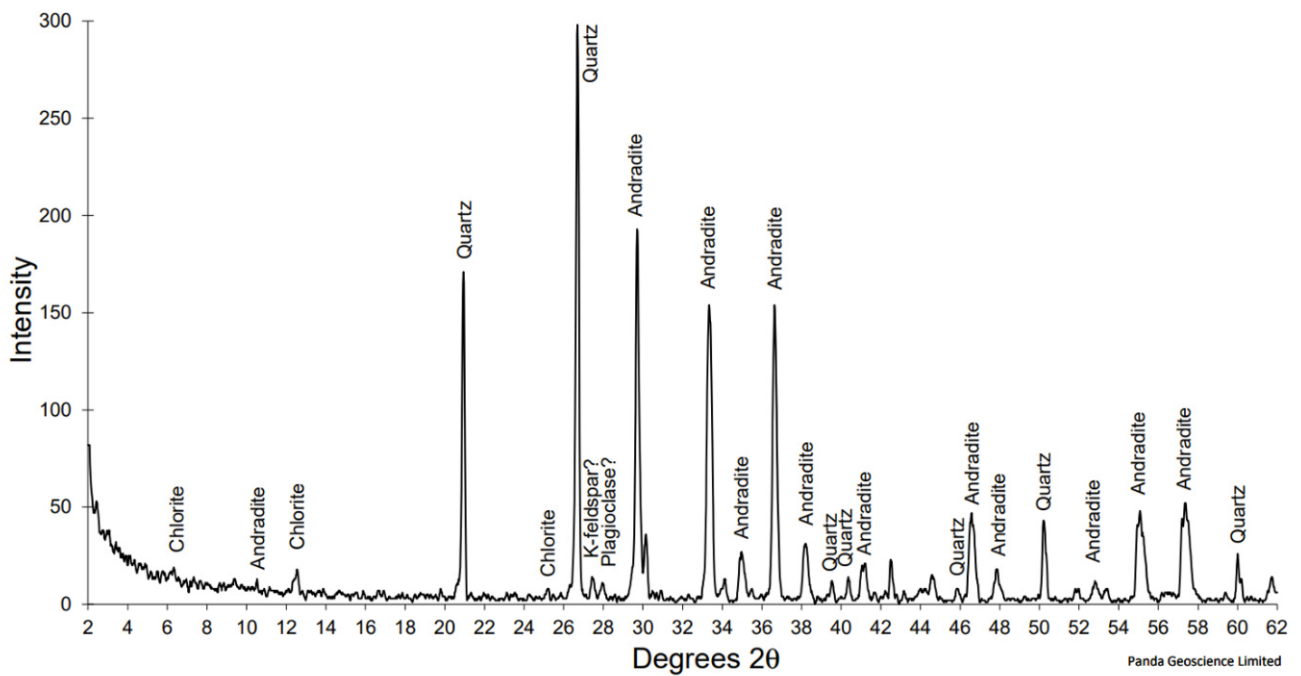


Figure S27: XRD analysis for sample NV.

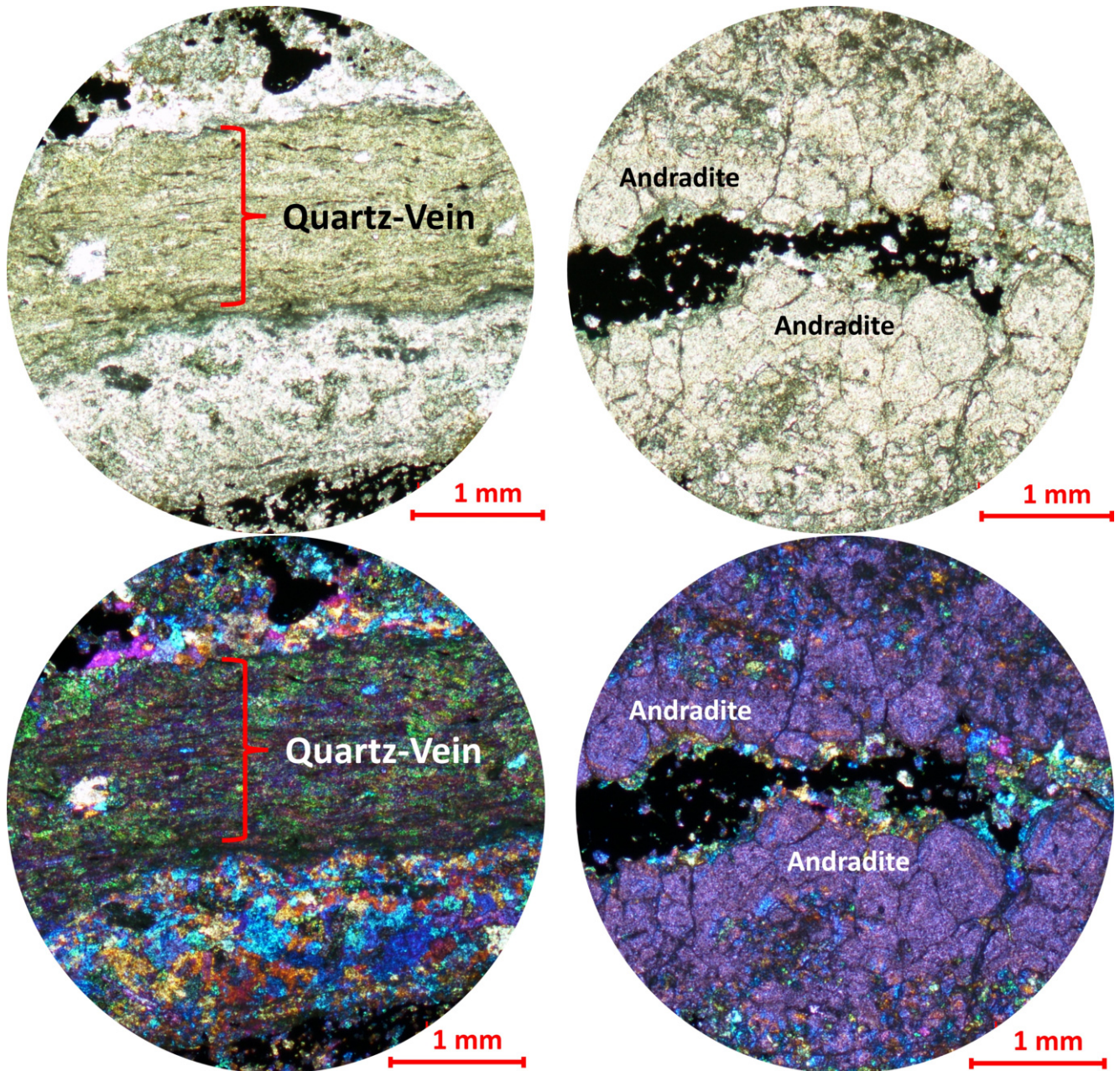


Figure S28: Microphotographs for sample NV. Transmitted (Top) and crosspolarized (bottom) light.

COPYRIGHT NOTICE

© The Author(s) 2023. This article is distributed under the terms of the **Creative Commons Attribution 4.0 International License**, which permits unrestricted use,

distribution, and reproduction in any medium, provided you give appropriate credit to the original author(s) and the source, provide a link to the Creative Commons license, and indicate if changes were made.